

Jade Townsend

Born 1977, Iowa - Lives and works in Brooklyn, New York

**GALLERY POULSEN**  
CONTEMPORARY FINE ARTS - COPENHAGEN

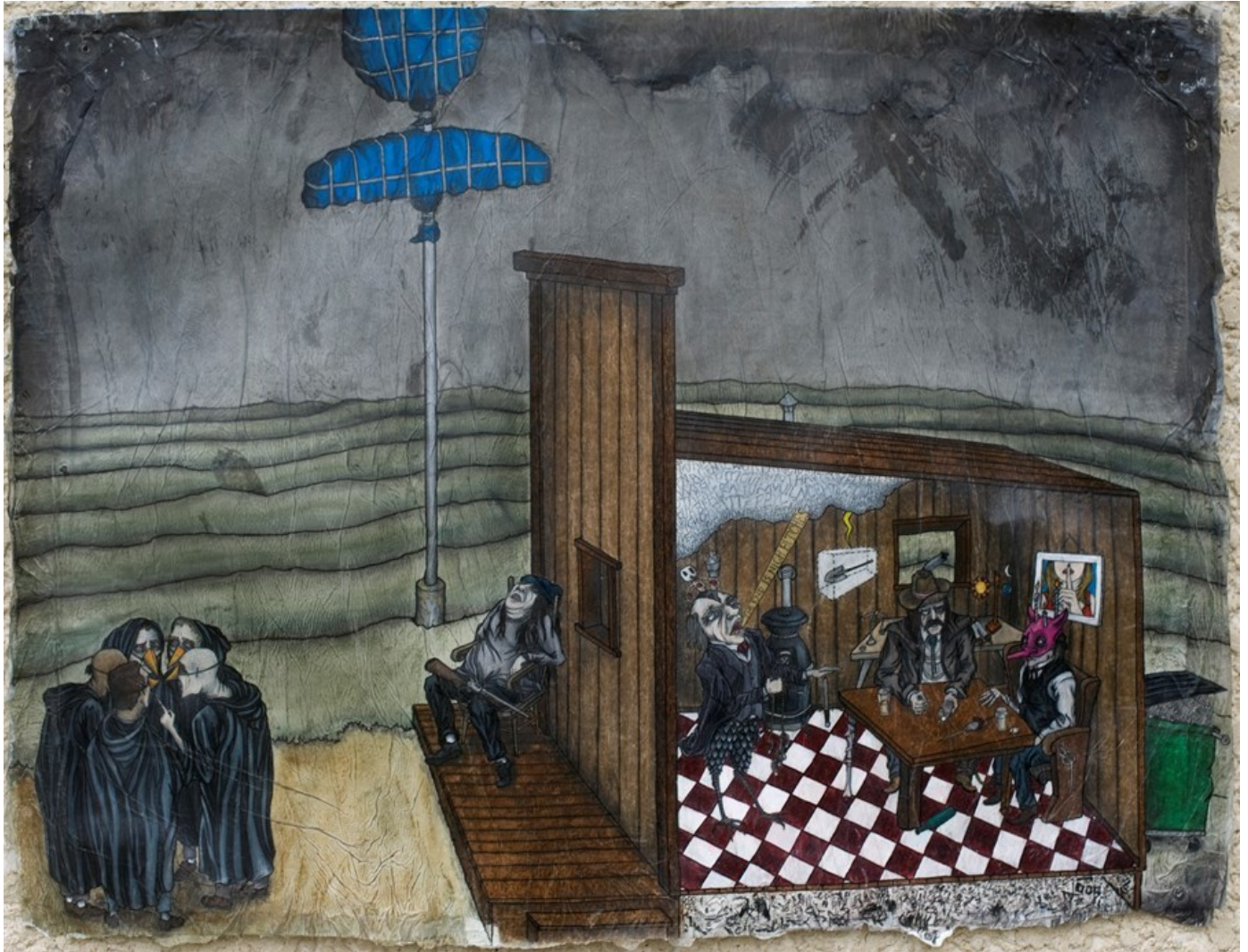


The Salvation of Terrible on Top 2015, mixed media on paper, 69 x 72 cm, 27 x 28 in

Jade Townsend

Born 1977, Iowa - Lives and works in Brooklyn, New York

**GALLERY POULSEN**  
CONTEMPORARY FINE ARTS - COPENHAGEN



The Offering of Ears To Freewill and Fate, 2016, Graphite, prisma color, pastel, oil, and ink on paper, 69 x 91 cm, 27 x 36 in

Jade Townsend

Born 1977, Iowa - Lives and works in Brooklyn, New York

**GALLERY POULSEN**  
CONTEMPORARY FINE ARTS - COPENHAGEN



The Forecast Stool (Thunderhead Cometh) 2019, Found/reclaimed pine wood. Shou Sugi Ban finish, 42 x 19 x 28cm, 16.5 x 7.4 x 11 in

Jade Townsend

Born 1977, Iowa - Lives and works in Brooklyn, New York

**GALLERY POULSEN**  
CONTEMPORARY FINE ARTS - COPENHAGEN



The Ballad of Terrible on Top - No Regets, 2015, Graphite, pastel, prisma color, oil and ink on paper, 61 x 58 cm, 24 x 23 in

Jade Townsend

Born 1977, Iowa - Lives and works in Brooklyn, New York

**GALLERY POULSEN**  
CONTEMPORARY FINE ARTS - COPENHAGEN



Eight of Wands, 2014, Graphite, prisma color, oil and ink on paper, 61 x 33 cm , 24 x 13 in

Jade Townsend

Born 1977, Iowa - Lives and works in Brooklyn, New York

**GALLERY POULSEN**  
CONTEMPORARY FINE ARTS - COPENHAGEN



Freewill & Fate-Freewill consoled by Delusion and Fate is hammer ed drunk making questionable alliances, 2014, Graphite, charcoal, oil, prisma color and ink on paper, 48 x 46 cm, 18.9 x 18.1 in

Jade Townsend

Born 1977, Iowa - Lives and works in Brooklyn, New York

**GALLERY POULSEN**  
CONTEMPORARY FINE ARTS - COPENHAGEN



Run you S.O.B. Run, 2014, Graphite, charcoal, prisma color and ink on paper, 64 x 58 cm, 25.2 x 22.8 in

Jade Townsend

Born 1977, Iowa - Lives and works in Brooklyn, New York

**GALLERY POULSEN**  
CONTEMPORARY FINE ARTS - COPENHAGEN



All is Well, 2014, Graphite, charcoal, prisma color, oil and ink on paper, 90 x 136 cm, 35.4 x 53.5 in



Jade Townsend

Born 1977, Iowa - Lives and works in Brooklyn, New York

**GALLERY POULSEN**  
CONTEMPORARY FINE ARTS - COPENHAGEN



Self Portrait as Furniture, 2014, Graphite on paper, 28 x 22 cm, 11 x 8.7 in

Jade Townsend

Born 1977, Iowa - Lives and works in Brooklyn, New York

**GALLERY POULSEN**  
CONTEMPORARY FINE ARTS - COPENHAGEN



The Disaster, 2013, Graphite, charcoal, prisma color, oil and ink on paper., 97 x 136 cm, 38.2 x 53.5 in

Jade Townsend

Born 1977, Iowa - Lives and works in Brooklyn, New York

**GALLERY POULSEN**  
CONTEMPORARY FINE ARTS - COPENHAGEN



Beached, 2013, Graphite, charcoal, prisma color, oil and ink on paper, 74 x 103 cm, 29.1 x 40.6 in

Jade Townsend

Born 1977, Iowa - Lives and works in Brooklyn, New York

**GALLERY POULSEN**  
CONTEMPORARY FINE ARTS - COPENHAGEN



Of stroking your own Fallow Horse / Solipsism, 2013, Graphite, charcoal, prisma color, oil and ink on paper, 58 x 56 cm, 22.8 x 22 in

Jade Townsend

Born 1977, Iowa - Lives and works in Brooklyn, New York

**GALLERY POULSEN**  
CONTEMPORARY FINE ARTS - COPENHAGEN



Little One, 2014, Graphite on paper, 13 x 13 cm, 5.1 x 5.1 in

Jade Townsend

Born 1977, Iowa - Lives and works in Brooklyn, New York

**GALLERY POULSEN**  
CONTEMPORARY FINE ARTS - COPENHAGEN

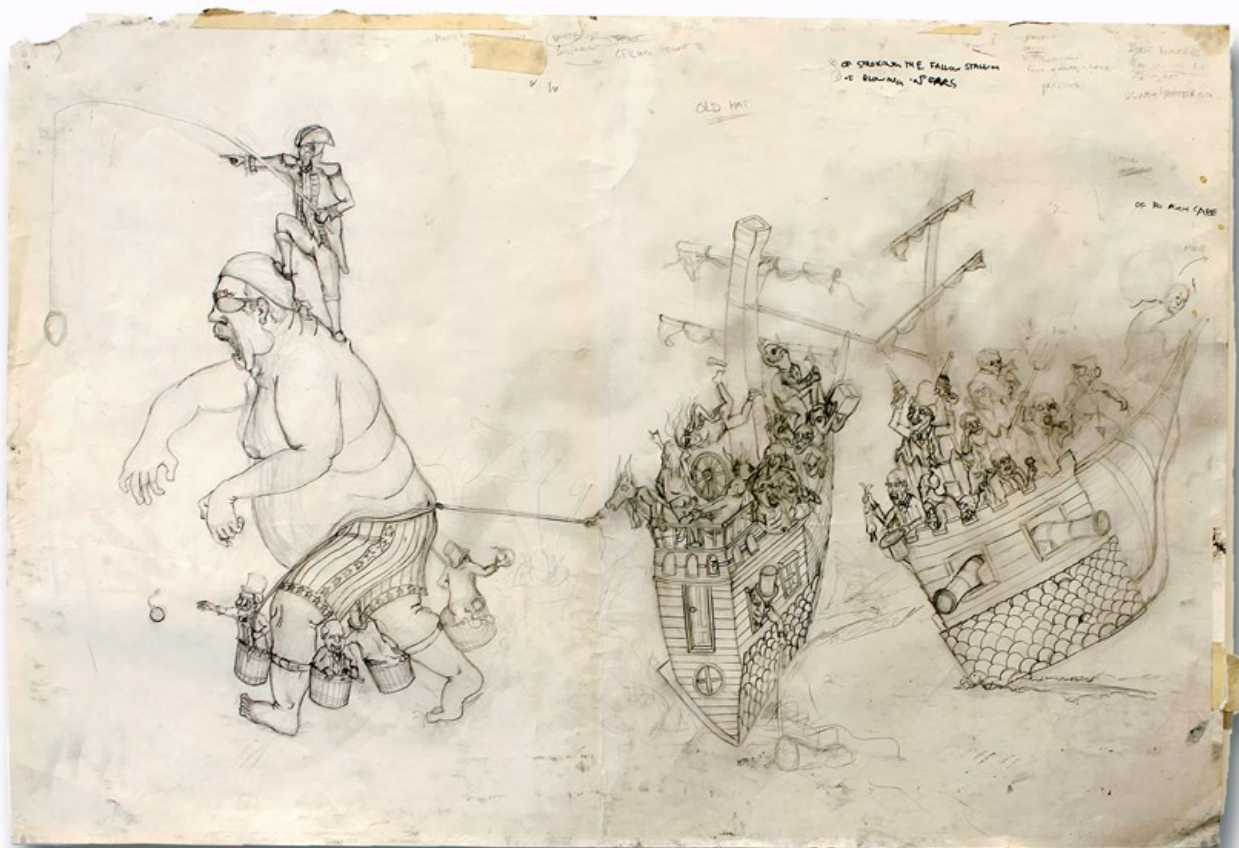


Bellum Omnium Contra Omnes, Collaboration between Jade Townsend and William Powhida, 2013, Digital print and imitation gold leaf on paper, edition of 24, 4AP, 118 x 224 cm, 46.5 x 88.2 in

Jade Townsend

Born 1977, Iowa - Lives and works in Brooklyn, New York

**GALLERY POULSEN**  
CONTEMPORARY FINE ARTS - COPENHAGEN



Study for 'Old Hat', 2013, Graphite, charcoal, prisma color, oil and ink on paper, 61 x 90 cm, 24 x 35.4 in

Jade Townsend

Born 1977, Iowa - Lives and works in Brooklyn, New York

**GALLERY POULSEN**  
CONTEMPORARY FINE ARTS - COPENHAGEN



Underbelly, 2010, 70 lbs of solid aluminum, black wrap, and aircraft cable, 50.8 x 30.5 x 50.8 cm, 20 x 12.1 x 20 in



Jade Townsend

Born 1977, Iowa - Lives and works in Brooklyn, New York

**GALLERY POULSEN**  
CONTEMPORARY FINE ARTS - COPENHAGEN



Of Alchemy, Revolution and Dreams, 2007, Pine, birch, brick, balsa foam, latex paint, ink and cloth, 40.6 x 30.5 x 45.7 cm, 16 x 12 x 18 in

Jade Townsend

Born 1977, Iowa - Lives and works in Brooklyn, New York

**GALLERY POULSEN**  
CONTEMPORARY FINE ARTS - COPENHAGEN



Hey Hey Woody Guthrie, 2007, Styrofoam, roscoe foam coat, krylo n paint, ink, pillow and satin pillow case, framed in glass montre., 60.9 x 3 5.5 x 15.2 cm, 24 x 14 x 6 in

## Jade Townsend

Born 1977, Iowa

Lives and works in Minneapolis

CV

### Education

2003 MFA, Hunter College, New York

1999 BFA, Iowa State University, Iowa

### Solo Shows

2015

Garage Sale, Curated by Hrag Vartanian at Auxiliary projects, Brooklyn, NY

2013

Vera Historia, Gallery Poulsen, Copenhagen, Denmark

Ship of Fools, soloshow with Gallery Poulsen at Volta NY

2012

Leviathan, Leslie Heller Workspace, New York, NY

2009

Sick, Sick Wind, Priska C. Juschka Fine Art, New York, NY

2008

Born Between..., Cress Gallery, University of Tennessee at Chattanooga, TN

YARDSALE', Priska C. Juschka Fine Art, New York, NY

2007

Born Between Piss and Shit, Art of This Gallery, Minneapolis, MN

2006

And the days fly by on their own, Priska C. Juschka Fine Art, New York, NY

### Selected Group Shows

2018

Black Mirror: Art as Social Satire, Saatchi Gallery, London, UK

2017

Cowboyland, HeliumCowboy Artspace, Hamburg, DE

Ekphrastic 2, Soovac, MPLS, MN

2016

Ekphrastic, Soovac, MPLS, MN

Tracing Your Climate, Northern Spark, MPLS, MN

The Moving Exhibition, Gallery Poulsen, Copenhagen, DK

Geo-Necro, ADA Gallery, Richmond, VA. Curated by Ryan Browning and Casey Jex Smith

Pretty Creepy, Booth Gallery, NYC, NY

Island Time, Houston Contemporary Art Museum, Houston, Texas

2015

Second Sight, Booth Gallery, NYC, NY

The Copenhagen Interpretation, The Lodge Gallery, NYC, NY

The Copenhagen Interpretation Vol. 2, Gallery Poulsen, Copenhagen, DK

2013

A Sense of Place, The Wellin Museum, Clinton, NY

The Decline and Fall of the Art World: Part 1, The 1%ers, Freight & Volume, New York, NY

Gallery Poulsen 10 Years Anniversary Show, Gallery Poulsen, Copenhagen, Denmark

The Benefit Auction for Typhoon Haiyan Relief, The Lodge Gallery, New York, NY

All-Star Cast, Galerie Baer, Dresden, Germany

2012

Simulacrum, Columbus College of Art and Design, Columbus, OH

Party Headquarters: Art in the Age of Political Absurdity, Pratt Manhattan Gallery, New York, NY (curated by Eleanor Heartney and Larry Litt)

Drawn to You - Works on Paper from New York, Gallery Poulsen, Copenhagen, Denmark

2011

Outer Space Gala and Benefit Auction, Exit Art, New York, NY

## Jade Townsend

Born 1977, Iowa

Lives and works in Minneapolis

New Image Sculpture, McNay Museum, San Antonio, TX (curated by Rene Paul Barilleaux)  
I Like the Art World and the Art World Likes Me, The Elizabeth Foundation for the Arts, New York, NY

2010

HouseWARNING, Hopkins Hall Gallery, Ohio State University, Columbus, OH  
Magicality, Platform Gallery, Seattle, WA  
Momenta Art Benefit, White Columns, New York, NY  
Global/National, The Order of Chaos, Exit Art, New York, NY

2009

Those About to Die Salute You, collaboration with Duke Riley, Queens Museum of Art in Flushing Meadows Corona Park, Queens, NY  
I, Daughter of Kong, collaboration with Duke Riley, Lower Manhattan Cultural Council, New York, NY  
Chelsea Visits Havana, 10th Havana Biennial, Museo Nacional de Bellas Artes, Havana, Cuba

2008

The Peekskill Project, organized by The Hudson Valley Center for Contemporary Art, Peekskill, NY  
Nature Interrupted, curated by Elga Wimmer, Chelsea Art Museum, New York, NY  
Waste Not, Want Not, Socrates Sculpture Park, Queens, NY  
Glass Houses, curated by Eddie Martinez, Werkstatte Gallery, New York, NY  
Remarks on Color, Galerie Baer, Dresden, Germany  
Scope Project Section, Scope Basel, Switzerland

2007

With Teeth, Priska C. Juschka Fine Art, New York, NY  
Leave New York, Sweet Home Gallery, New York, NY

2005

Of Violence and Solitude (My Neighbor is Trying to Kill Me), Green Door Gallery, Kansas City, MO

2004

International Exchange Exhibition, Hunter College Times Square Gallery, New York, NY  
Year Catalogue Auction, Year Project Space, DUMBO, Brooklyn NY  
Two Enter and One Leaves, Year Project Space, DUMBO, Brooklyn NY

2003

Summer.Show.03, \*sixtyseven, Brooklyn, NY  
Disaster, ABC NO RIO, New York, NY  
MFA Thesis Exhibition, Hunter College Times Square Gallery, New York, NY  
Exit Biennial: The Reconstruction, Exit Art, New York, NY  
All Messed Up With Nowhere to Go, Dam, Stuhltrager Gallery, Brooklyn, NY

### Collaborative Shows

2014

New New Berlin, with William Powhida, Galveston Artist Residency, Galveston, TX

2012

Bellum Omnium Contra Omnes, double solo exhibition with William Powhida at Gallery Poulsen, Copenhagen, Denmark

2010

Lemonade Stand, with William Powhida, Pulse Miami and Nada New York

2009

Ghost, with Camilla Candida Donzella, Scope Basel, Basel, CH

### Awards

2015

NYFA Fellowship finalist in the category of Printmaking/Drawing/Bookarts

### Set Design

2011

Smudge, AtticRep, San Antonio, TX

### Lectures

2015 Visiting Artist and lecture, MCAD, Minneapolis, MN

2014 Visiting Artist, Hamilton College, Clinton NY

2013 Visiting Artist, Kent State University, Kent, OH

2013 Visiting Artist, Montclair State University, Montclair, NJ

2011 Artist Talk, Blue Star Contemporary Art Center, San Antonio, TX

## **Jade Townsend**

Born 1977, Iowa

Lives and works in Minneapolis

2011 Visiting Artist, Parsons The New School for Design, New York, NY

2011 Visiting Artist, New Image Sculpture, McNay Art Museum, San Antonio, TX

2010 Visiting Artist, Pace University, New York, NY

2008 Visiting Artist, "Born Between..." Cress Gallery, University of Tennessee at Chattanooga, TN

2008 Visiting Artist, Issues in Contemporary Art, CUNY Lehman College, Bronx, NY